



Glass Sol
Integrated Solutions

ABOUT US :

Glass Sol, an organization better known for its quality service and commitment. We deal in Architectural Glass Solutions and Glass Hardware.

Glass-Sol provides superior turnkey services for managing the execution of the glass related elevations in India, Serving both the Commercial and domestic sectors. Glass-Sol brings a fresh and innovative approach to consulting services, acting as liaison between the end-user and the client. Our goal is to exceed the expectations of every client by offering outstanding customer service, increased flexibility, and greater value, thus optimizing system functionality and improving operation efficiency. Our associates are distinguished by their functional and technical expertise combined with their hands-on experience, thereby ensuring that our clients receive the most effective and professional service.

As experts in glass elevations and hardware distribution Glass Sol is involved in every stage upon client selection of the qualitative aspect from concept implementation to completion offering continuous functional and technical support.

Our extensive skills encompass all aspects of implementation and operation, including customization requirements of the client....

Typically, we are on-site at the client locations handling client contact, providing functional and technical support resolving any and all troubleshooting issues that arise when the client initiates the unique concepts by customizing the existing product.

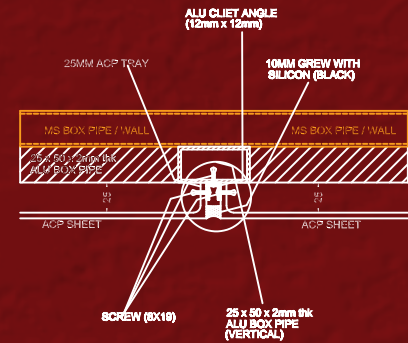
In order to meet the individual needs of clients, Glass-Sol maintains a wide range of expertise. We excel in spider glazing/ Shop front elevations with frame and frame less partitions/ canopy designs/ shower partitions in sliding and openable mechanisms, ACP elevations/ Automatic sensor systems/ Balustrade systems and security systems as well.

At Glass-Sol, we are continually expanding upon our knowledge and services to assist clients with successful implementation of several projects across India

- ♦ Unlike other consulting firms, at Glass-Sol we possess operational experience in Commercial/Domestic, Interior/Exterior kind of elevations.
- ♦ Our associates are well versed in all aspects of multiple location management ensuring repeat business associations.
- ♦ We pride ourselves on our proven track record for effectively administering multiple implementations. This is due to effectively directing team members in the right directions maintaining time schedules.
- ♦ Exceptional functional and technical expertise coupled with extensive industry knowledge makes Glass Sol the ideal choice for implementation of your desires into reality with expertise.

We have done about 250 projects PAN India till date.....

ALUMINUM COMPOSITE PANEL (ACP)



- ♦ Aluminum Composite panel is composed of non combustible polyethylene core laminated and sandwiched between two fine aluminum sheets. The external aluminum surface is coated with superior quality PVDF resin to ensure durability, stability, corrosion and weather resistance. The inside aluminum surface is polyester coated ensuring smooth surface.
- ♦ Thickness: ACP Sheets are available in 3mm and 4mm thickness. Considering the weather conditions / Load Bearing conditions and customer choice, the thickness of the sheets are considered.
- ♦ Color: ACP Sheets are available in wide range of colors, Wooden grain patterns are also available to meet the interior and exterior Themes of the elevation patterns.

Salient features of ACP :

- ♦ Very light reducing the dead weight of the building and frame loading.
- ♦ Resistant to extremes of weather exposure and temperature.
- ♦ Excellent UV characteristics retaining color after long exposure.
- ♦ High impact resistance
- ♦ 100% maintenance free
- ♦ Good sound insulation.

General Construction :

- ♦ Aluminium Composite Panels are composed of low densities Polyethylene sand witched between aluminium sheets.
- ♦ The Aluminium Cladding Comprises of Aluminium Composite Panel fixed to backup framework comprising of 50mm x 25mm Aluminium box Sections (as per IS 63400, Jindal or Equivalent make) enclosed to the wall / MS support structure, using GI "U" clamps with slots for Plumb adjustment. All the grooves of the ACP panels would be sealed with silicon sealant (Dow Corning make) which is weather and water resistant.





STICK GLAZING , SEMI-UNITIZED GLAZING AND CURTAIN WALL GLAZING

Reflective / Tinted glass from SAINT GOBAIN / ASAHI / MODI is specially made by a process known as on-line pyrolytic coating, also known as hard coating which involves fusing precious metallic oxides on the surface of the float glass at high temperatures while glass is under formation. This coating gives mirror like appearance which is aesthetically pleasing and provides superior functional benefits like solar control and glare reduction. It gives Thermal comfort and visual comfort.

ALUMINUM

The frame work is made of rectangular aluminum tube of size 64mm x 58mm and electro colored to 15 microns. The Aluminum extrusion is manufactured as per IS 63400 and the glass is pasted to it using the structural sealant. And a Sub Frame of 26.5 x 20.5 x 1.8mm is fabricated and the above mentioned glass makes are pasted to the sections and duly cured for a minimum of a week's time using structural sealants ensuring the fool proof bonding of the glass to metal before erecting it to the main Transom and Mullion in case of a Semi- Unitized Glazing Patterns.

GLAZING SEALANT

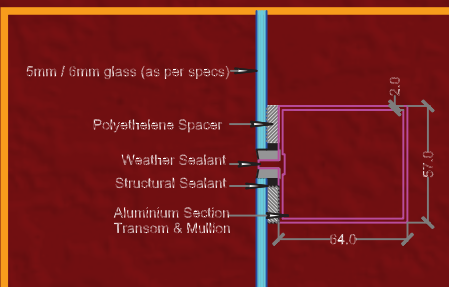
Dow Corning 995 Silicone Structural glazing sealant is used for fixing the glass with aluminum frame. This Sealant is Odorless, non corrosive and highly resisting to ultra violet radiation, heat and humidity.

WEATHER PROOFING SEALANT

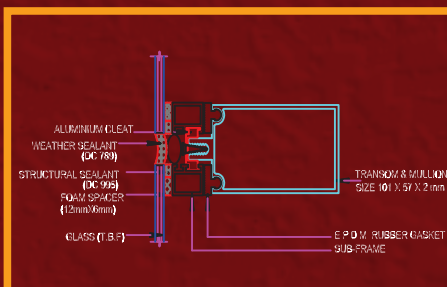
Dow Corning 789 silicone weather proofing sealant with very good weather ability and excellent recovery from expansion and compression.

HARDWARE

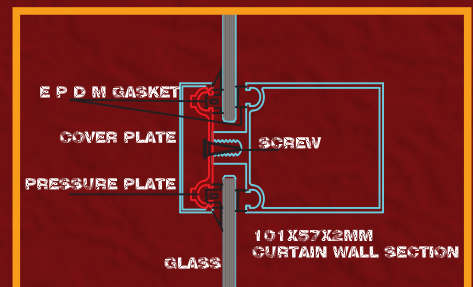
High quality expansion bolts with good load bearing capacity is used to fix the Aluminum frame work to the wall.



STICK SYSTEM



SEMI-UNITISED SYSTEM



CURTAIN WALL SYSTEM

SPIDER GLAZING

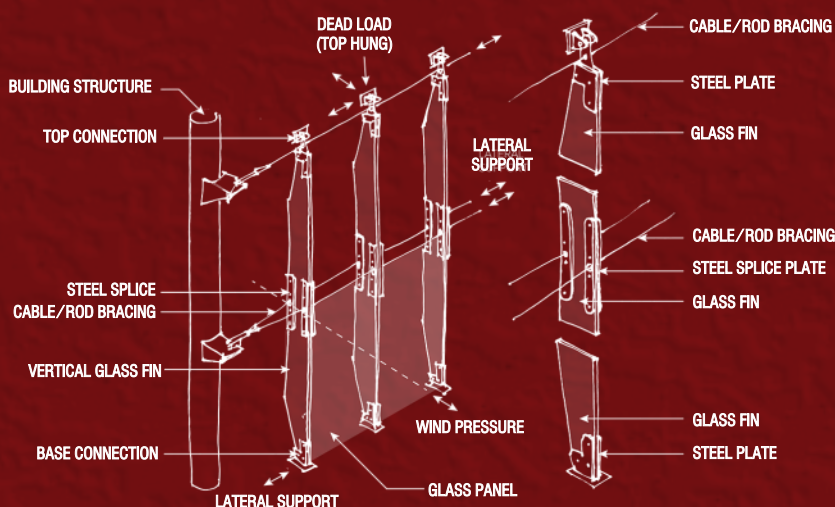
SPIDER GLAZING is a complete system for bolted glass structures. The complete structure includes the glass, fixings, fasteners and SPIDER brackets for connection to the framework.

The high-grade stainless steel fixings are designed to absorb all static and dynamic loads (i.e. the dead weight of the glass, wind loads, snow loads and differential expansion due to temperature difference) and distribute them to the support structure.

Intermediate elements which are inserted between the bolt and the glass ensure uniform transmission of stresses whilst avoiding local stresses & a watertight facade.

Design Principles:

- ♦ The size of the supporting structure must be adequate to take the weight of the glass and the wind load conditions so it does not put any strain on the glass itself.
- ♦ The glass needs to withstand the wind loads and imposed dead loads.
- ♦ There must be a gap between the two panes of glass to avoid transmitting stresses and to allow space for the mastic weather seal.
- ♦ Various types of support structures are possible.



Patch Fittings



Railings (Balustrade System)



Shower Partitions



GLASS SOL – EXPERTISE

- ♦ Spider Glazing
- ♦ Structural Glazing
- ♦ Curtain wall Glazing
- ♦ Semi-Unitized Glazing
- ♦ Shop Front Elevations with Frame and Frameless Partitions
- ♦ ACP Cladding
- ♦ Canopies
- ♦ Shower Partitions
- ♦ Automatic Sensor Systems
- ♦ Balustrade Systems
- ♦ Security Systems.

OUR ESTEEMED CLIENTS



Glass Sol

Integrated Solutions



CORPORATE OFFICE :

#1-19-80/55, Vijayapuri Colony
Sainikpuri, Hyderabad-62.

ADMIN CUM SALES OFFICE :

Flat No : 3B, RA Residency,
Somajiguda, Hyderabad.

Cell: +91-9849011458 | Email : venkat@glasssol.in | Website : www.glasssol.in